

The Kennesaw II 3-4 | 2½
1½ | 2,434 ft²



Elevation 1



Elevation 2



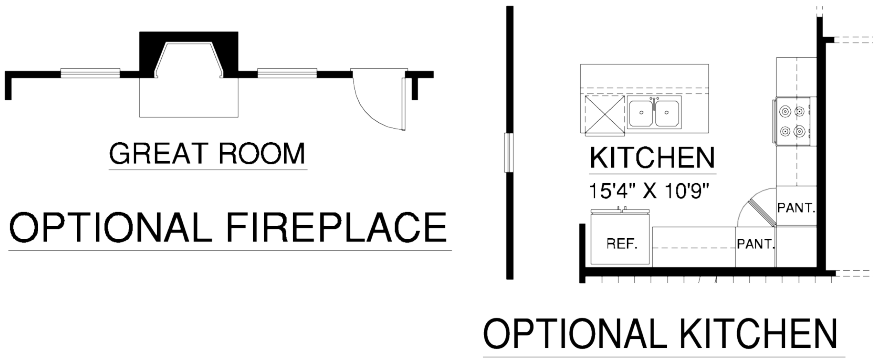
Elevation 3



Elevation 4



The Kennesaw II



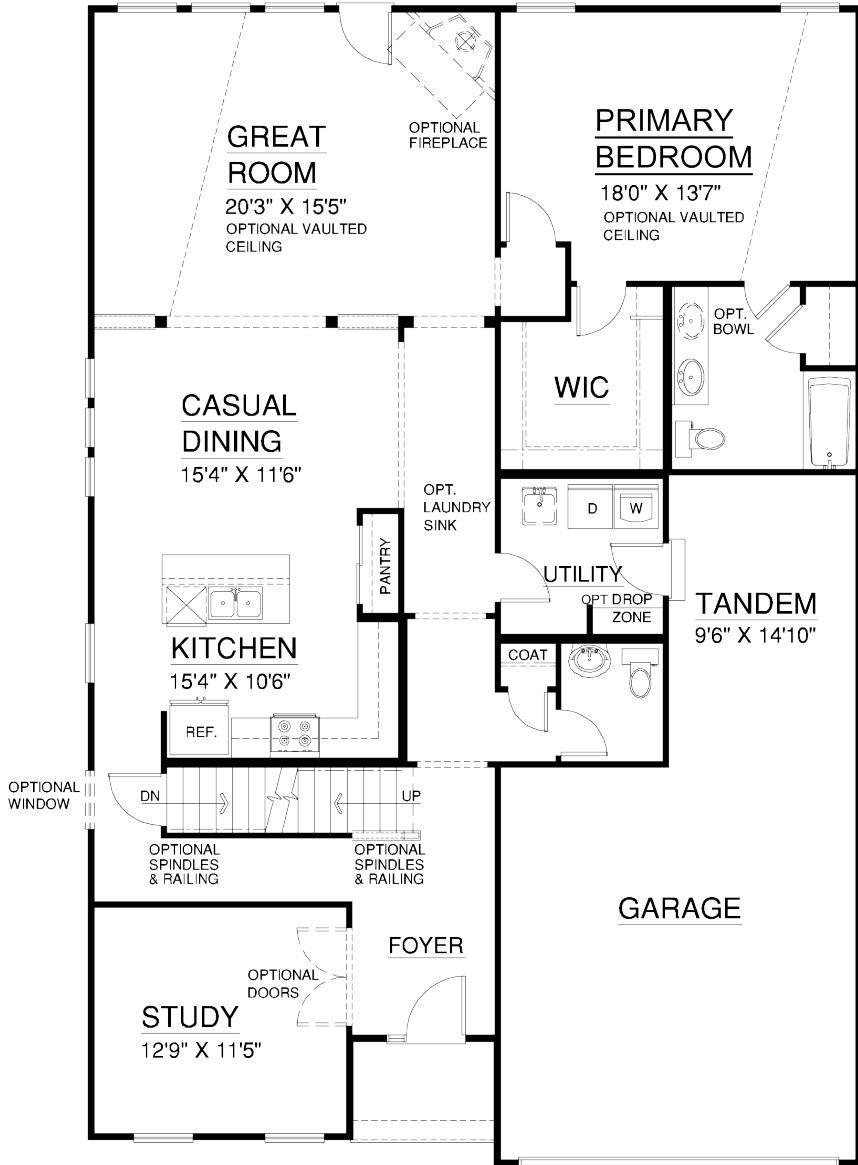
GREAT ROOM

OPTIONAL FIREPLACE

KITCHEN

15'4" X 10'9"

OPTIONAL KITCHEN



GREAT ROOM

20'3" X 15'5"
OPTIONAL VAULTED CEILING

PRIMARY BEDROOM

18'0" X 13'7"
OPTIONAL VAULTED CEILING

CASUAL DINING

15'4" X 11'6"

KITCHEN

15'4" X 10'6"

WIC

UTILITY

TANDEM

9'6" X 14'10"

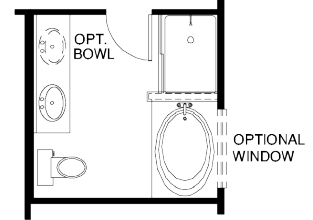
GARAGE

FOYER

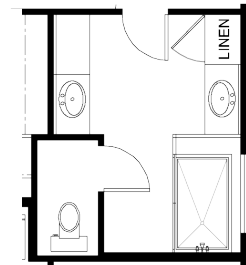
STUDY

12'9" X 11'5"

FIRST FLOOR PLAN



OPT. PRIMARY BATH WITH SEPARATE TUB & SHOWER



OPT. PRIMARY BATH W/ SHOWER

Consort Homes L.L.C. ©2024. All rights reserved.

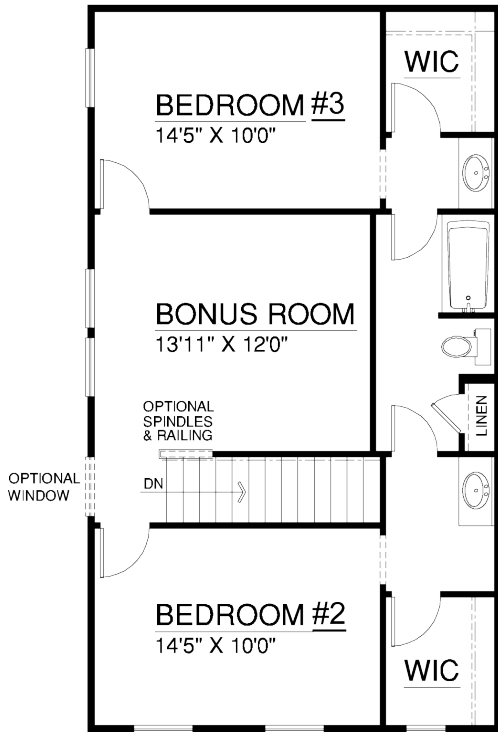
Artists renderings may vary in precise detail from actual construction. Prices may vary depending on elevation, see sales manager for more details. All lot grading is approximate. All dimensions are approximate. Consort Homes, in an effort to improve its product reserves the right to make changes without notice. Engineer determines left or right-handed house. Some renderings shown with optional dormer(s) and/or upgraded garage doors.



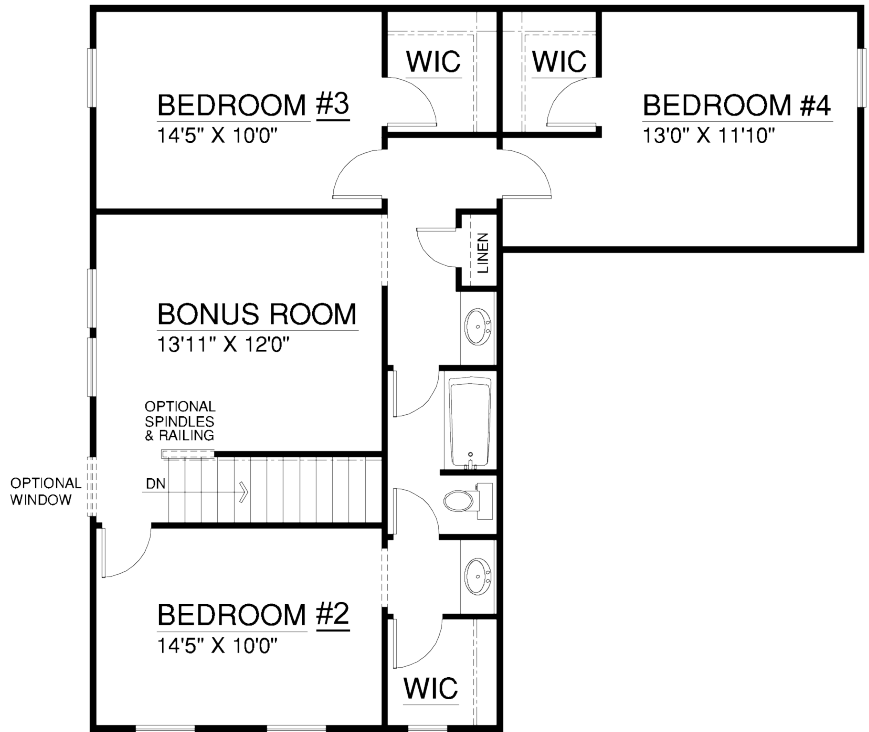
Consort-Homes.com



The Kennesaw II



SECOND FLOOR PLAN



OPTIONAL SECOND FLOOR PLAN WITH 4TH BEDROOM



Consort Homes L.L.C. ©2024. All rights reserved.
 Artists renderings may vary in precise detail from actual construction. Prices may vary depending on elevation, see sales manager for more details. All lot grading is approximate. All dimensions are approximate. Consort Homes, in an effort to improve its product reserves the right to make changes without notice. Engineer determines left or right-handed house.

Consort-Homes.com

